



Blended expertise, purposefully applied...

We are a Chiswick based residential property consultancy that provides in-depth experience in the disciplines of estate agency, residential lettings, property management, property staging and interior design – a blend of expertise not commonly found in estate and lettings agency businesses.

Having this multi-faceted capability enables us to deliver success to our clients that are seeking a more bespoke and discreet experience than typically offered by high street estate or lettings agents.

Clients value our integrity, energy, expertise and unbiased advice...

The core values of our business are; integrity, clarity and success. Our advice and services are delivered from a trusted platform of professional qualification, experience, dedication and a wealth of in-depth knowledge. This thorough, yet innovative approach to everything that we do has resulted in a strong track record, as evidenced by consistent results and unquestionable success.

What is the new meaning of Bespoke?...

We work with an adaptable approach to our processes to suit individual clients requirements. For example; many of our clients want to avoid public promotion and seek discreet introductions. Over 70% of our transactions are completed without public marketing. We spend less time promoting ourselves and more time combining modern online marketing with a lifetime of networking to introduce the right person in the right way.

More doesn't mean more...

We consciously keep our active portfolio compact, so that we can successfully apply the time, high levels of detail, attention and management you require and deserve whilst achieving our joint objective, success.



ST. MARY'S GROVE, W4

A well presented 755 Sq Ft / 70 Sq M ground floor, two bedroom maisonette that features a 15'1 reception room, use of lawned shared garden and two external storage sheds.

The accommodation comprises: private front door leading to internal hallway, further door leading to entrance hallway with storage cupboard, 15'1 reception room with feature fireplace, 13'11 fully fitted kitchen, two double bedrooms, bathroom, shared lawned garden and two exterior storage sheds.

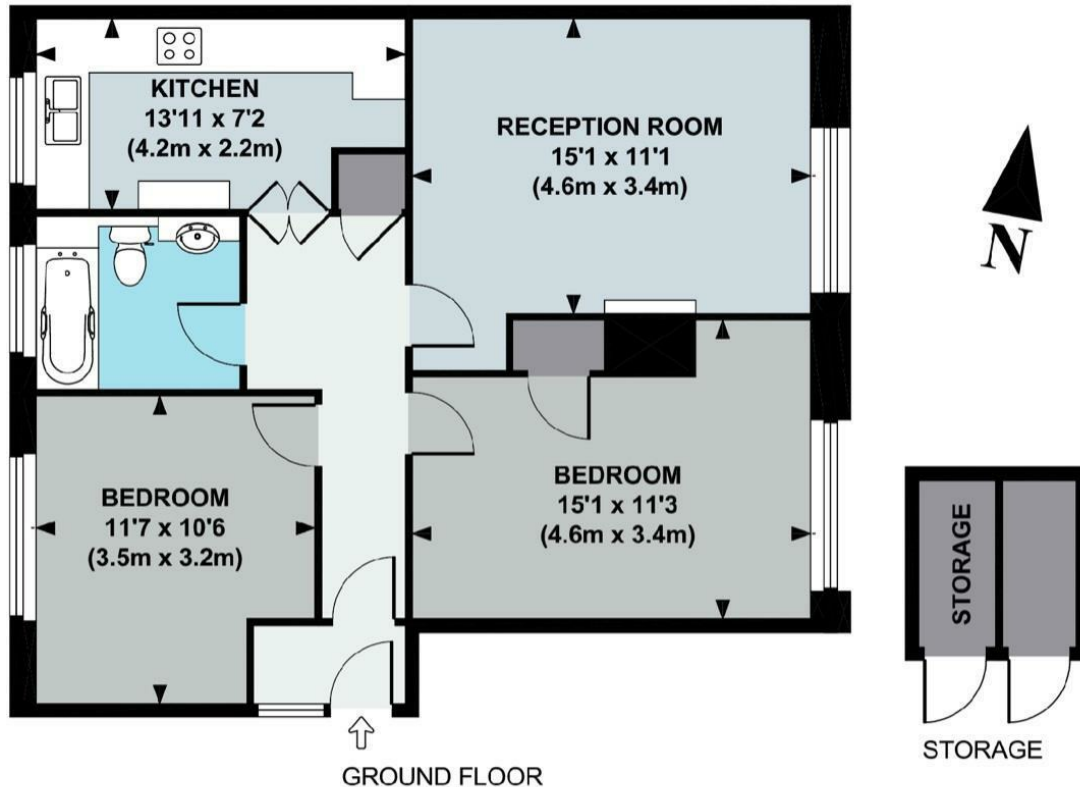
St. Mary's Grove is located within a highly desirable area of Chiswick known as Grove Park that offers a wide selection of amenities including, local shopping and bars & restaurants at Fauconberg Village, Chiswick House & Grounds and excellent transport connections into and out of town.

Pets permitted (subject to agreement of conditions within specific pet clause).

Not available to move-in until 27th June 2024 due to existing tenancy not terminating until 24/6/2024.



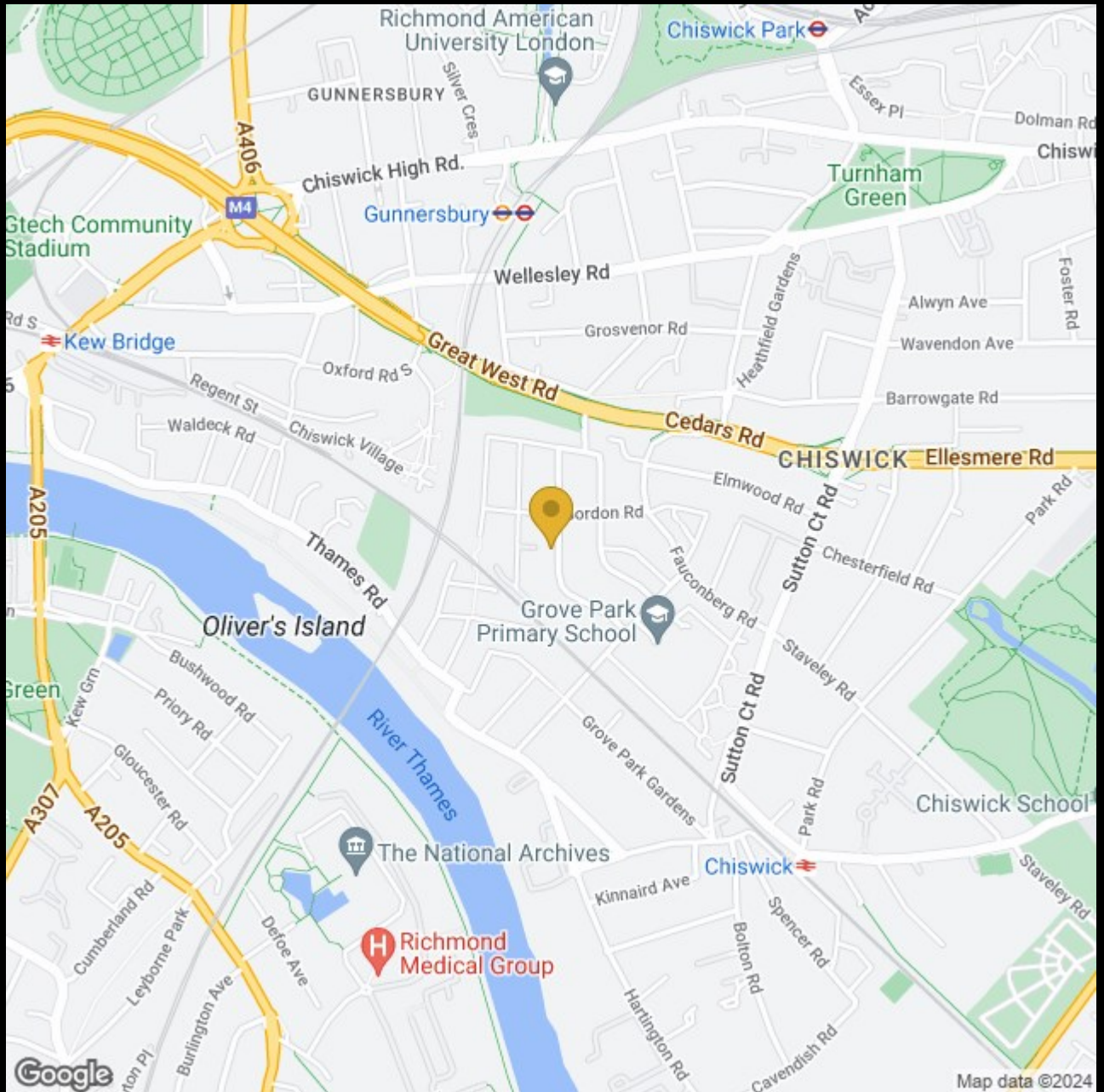




APPROX. GROSS INTERNAL FLOOR AREA 755 SQ FT / 70 SQ M

Floor plan produced in accordance with RICS Property Measurement Standards incorporating International Property Measurement Standards (IPMS2 Residential). © Red i 2021

Produced for illustration purposes and may not truly reflect design or dimensions and should not be used for valuation, condition or design purposes.



020 8995 2030
enquiries@harpersofchiswick.com
www.harpersofchiswick.com

www.twitter.com/HarpersChiswick
www.facebook.com/harpersofchiswick
www.instagram.com/harpersofchiswick
www.pinterest.co.uk/harpersofchiswick