





Blended expertise, purposefully applied...

We are a Chiswick based residential property consultancy that provides in-depth experience in the disciplines of estate agency, residential lettings, property management, property staging and interior design – a blend of expertise not commonly found in estate and lettings agency businesses.

Having this multi-faceted capability enables us to deliver success to our clients that are seeking a more bespoke and discreet experience than typically offered by high street estate or lettings agents.

Clients value our integrity, energy, expertise and unbiased advice...

The core values of our business are; integrity, clarity and success. Our advice and services are delivered from a trusted platform of professional qualification, experience, dedication and a wealth of in-depth knowledge. This thorough, yet innovative approach to everything that we do has resulted in a strong track record, as evidenced by consistent results and unquestionable success.

What is the new meaning of Bespoke?...

We work with an adaptable approach to our processes to suit individual clients requirements. For example; many of our clients want to avoid public promotion and seek discreet introductions. Over 70% of our transactions are completed without public marketing. We spend less time promoting ourselves and more time combining modern online marketing with a lifetime of networking to introduce the right person in the right way.

More doesn't mean more...

We consciously keep our active portfolio compact, so that we can successfully apply the time, high levels of detail, attention and management you require and deserve whilst achieving our joint objective, success.

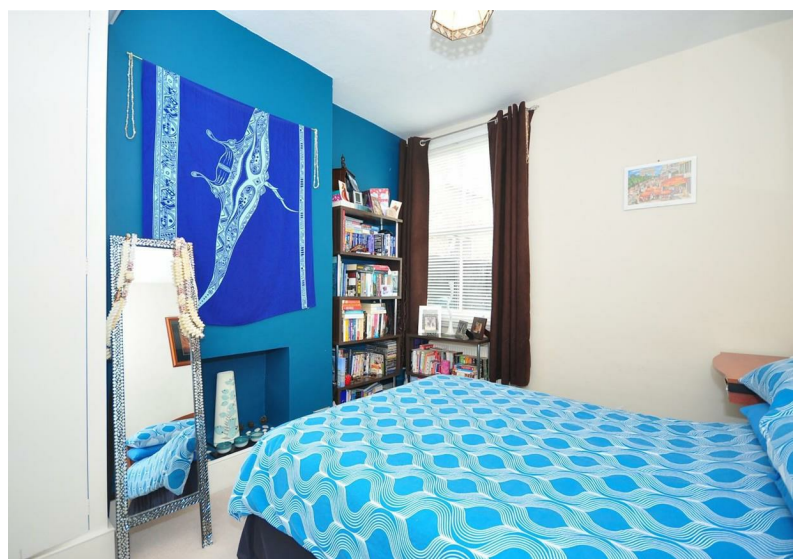


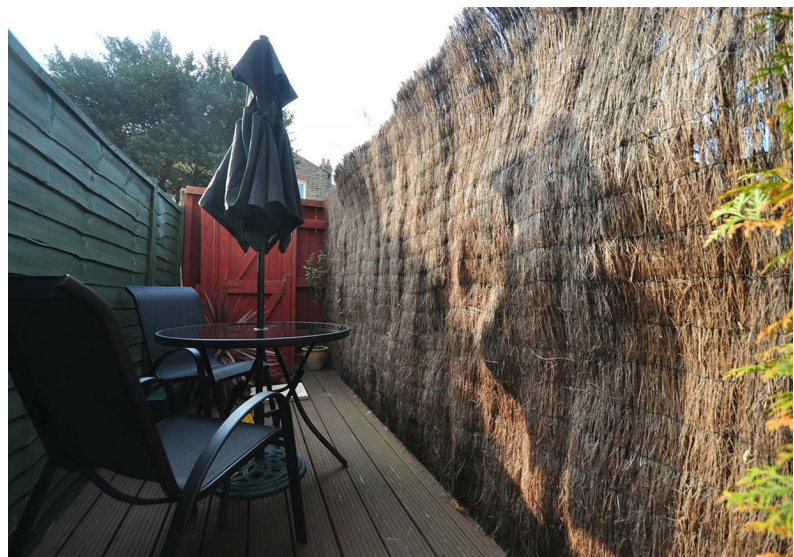
VALETTA ROAD, W3

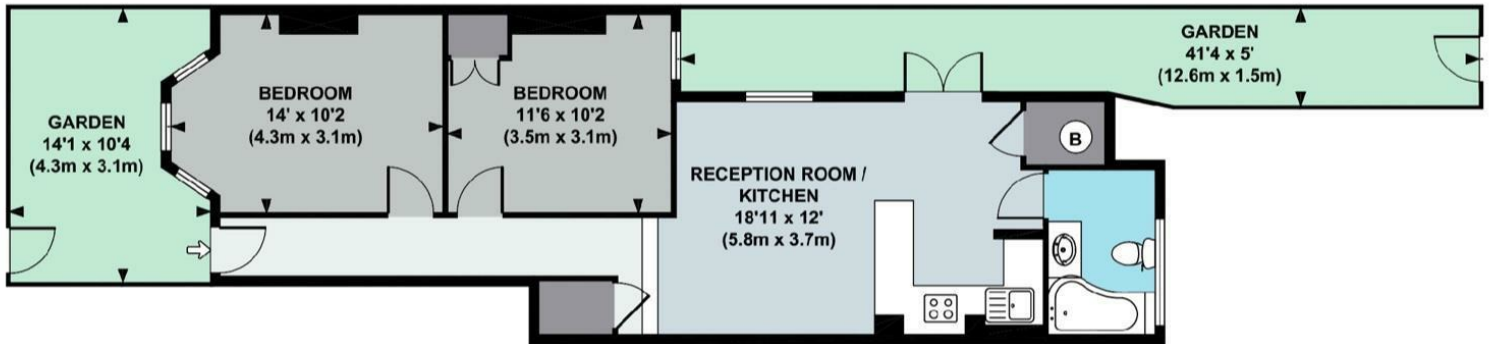
A well presented two double bedroom maisonette that features a 18'11 reception room and private south facing garden.

The accommodation comprises: private front door leading to entrance hallway with understairs cupboard, 18'11 reception room incorporating fully fitted kitchen, two double bedrooms, recently refurbished bathroom and decked South facing garden.

Valetta Road is located in an area of West London known as Wendell Park that is well known for its access to local amenities including parks, local shopping, bars & restaurants, Westfield Shopping Centre, Chiswick High Road, King Street and excellent transport connections into and out of town. Please click or copy and paste the link below or visit www.oliverfinn.com for a 12 page flip book brochure, slide show and floor plan of this property or call 020 8995 2030 for further details or to book a viewing. <http://www.oliverfinn.com/property/valetta-road-w3-chiswick/10720> We look forward to being of service.





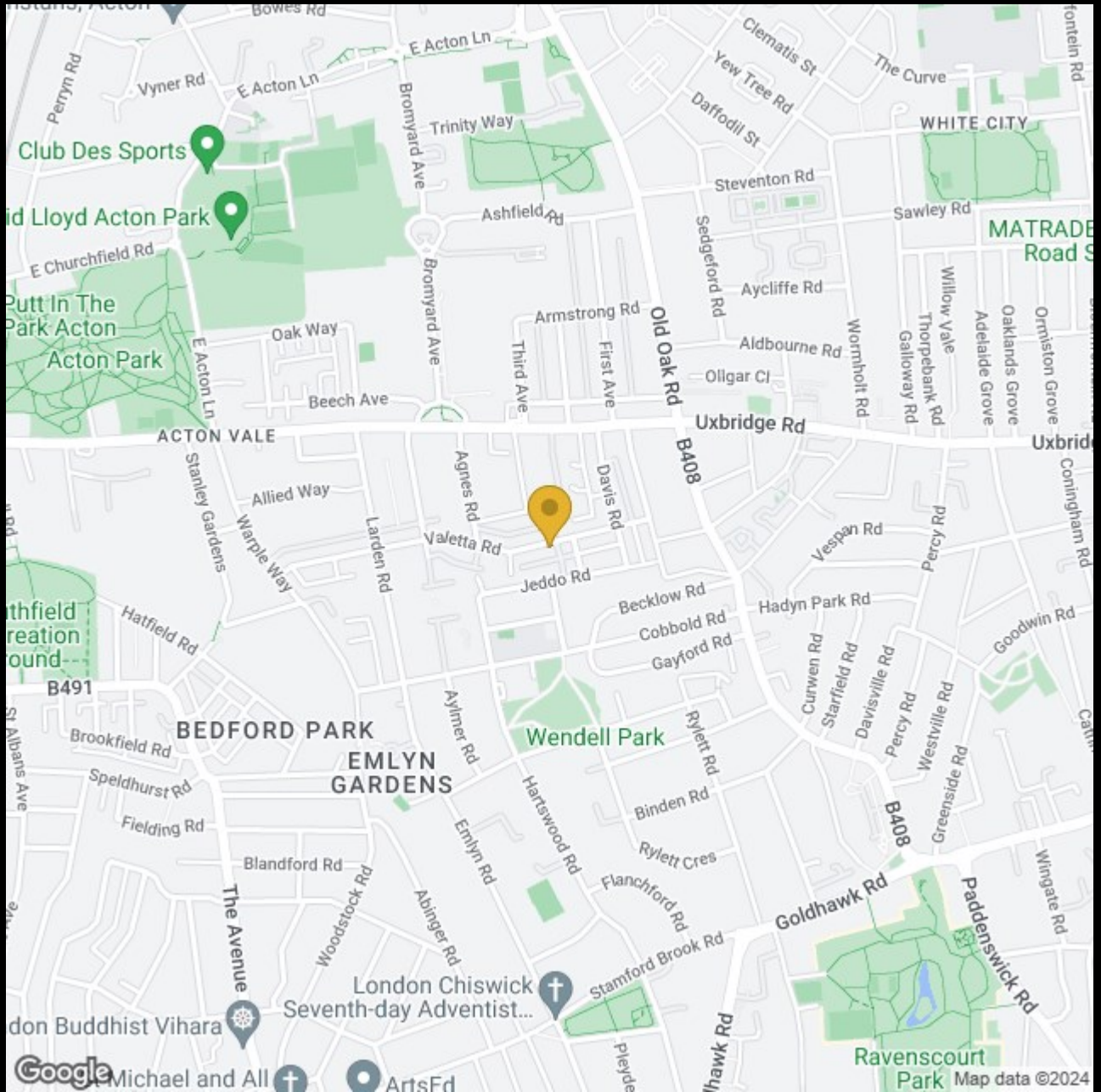


GROUND FLOOR

APPROX. GROSS INTERNAL FLOOR AREA 622 SQ FT / 58 SQ M

Floor plan produced in accordance with RICS Property Measurement Standards incorporating International Property Measurement Standards (IPMS2 Residential). © Red i 2021

Produced for illustration purposes and may not truly reflect design or dimensions and should not be used for valuation, condition or design purposes.



Club Des Sports

Mid Lloyd Acton Park

Putt In The Park Acton

Acton Park

ACTON VALE

BEDFORD PARK

EMLYN GARDENS

Wendell Park

London Buddhist Vihara
Seventh-day Adventist...

WHITE CITY

MATRADE Road S

Uxbridge

Google

Michael and All

ArtsEd

Ravenscourt Park

Map data ©2024

020 8995 2030
enquiries@harpersofchiswick.com
www.harpersofchiswick.com

www.twitter.com/HarpersChiswick
www.facebook.com/harpersofchiswick
www.instagram.com/harpersofchiswick
www.pinterest.co.uk/harpersofchiswick