



### **Blended expertise, purposefully applied...**

We are a Chiswick based residential property consultancy that provides in-depth experience in the disciplines of estate agency, residential lettings, property management, property staging and interior design – a blend of expertise not commonly found in estate and lettings agency businesses.

Having this multi-faceted capability enables us to deliver success to our clients that are seeking a more bespoke and discreet experience than typically offered by high street estate or lettings agents.

### **Clients value our integrity, energy, expertise and unbiased advice...**

The core values of our business are; integrity, clarity and success. Our advice and services are delivered from a trusted platform of professional qualification, experience, dedication and a wealth of in-depth knowledge. This thorough, yet innovative approach to everything that we do has resulted in a strong track record, as evidenced by consistent results and unquestionable success.

### **What is the new meaning of Bespoke?...**

We work with an adaptable approach to our processes to suit individual clients requirements. For example; many of our clients want to avoid public promotion and seek discreet introductions. Over 70% of our transactions are completed without public marketing. We spend less time promoting ourselves and more time combining modern online marketing with a lifetime of networking to introduce the right person in the right way.

### **More doesn't mean more...**

We consciously keep our active portfolio compact, so that we can successfully apply the time, high levels of detail, attention and management you require and deserve whilst achieving our joint objective, success.



## PUMP HOUSE CRESCENT, TW8

---

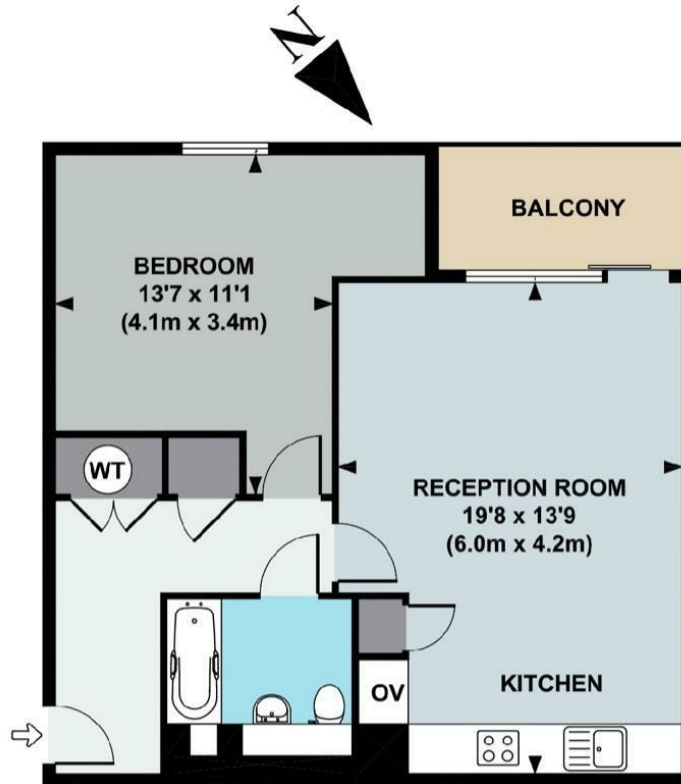
A luxury 556 Sq Ft / 52 Sq M apartment that features a 19'8 reception room, private west facing balcony, underground parking, lift, gymnasium and boutique 24 hour concierge.

The accommodation comprises: entrance hallway with storage cupboard, 19'8 reception room incorporating contemporary fitted kitchen, 13'7 bedroom, luxury bathroom, private balcony with distant views of West London and secure underground parking for one car.

Pump House Crescent is a recently constructed luxury village located by Kew Bridge thus providing excellent local amenities including, shopping on Chiswick High Road, river walks and Kew Gardens combined with excellent transport connections into and out of town including being walking distance to Kew Bridge BR Station (Direct to Waterloo).





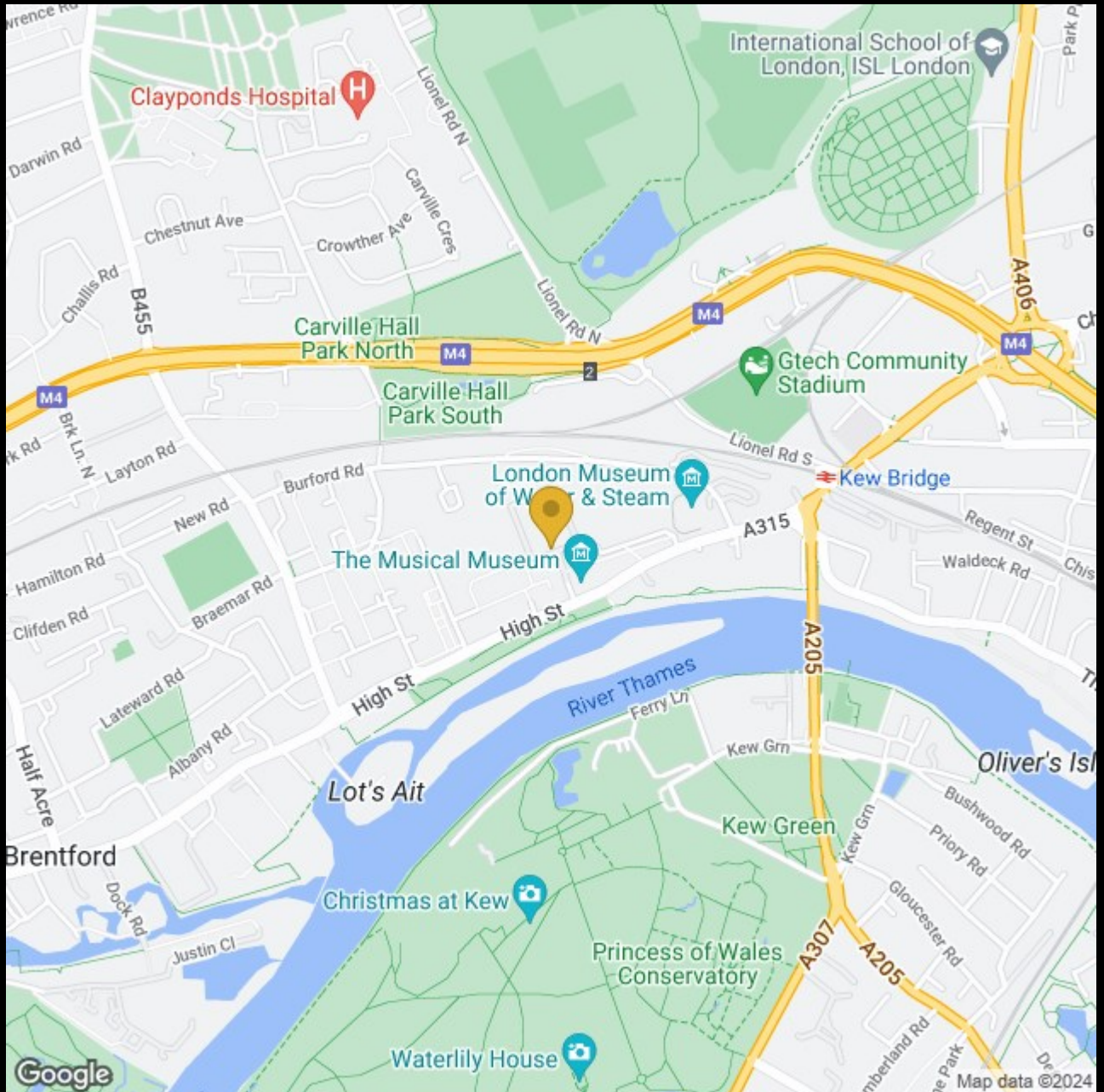


FOURTH FLOOR

**APPROX. GROSS INTERNAL FLOOR AREA 556 SQ FT / 52 SQ M**

Floor plan produced in accordance with RICS Property Measurement Standards incorporating International Property Measurement Standards (IPMS2 Residential). © Red i 2021

Produced for illustration purposes and may not truly reflect design or dimensions and should not be used for valuation, condition or design purposes.





020 8995 2030  
enquiries@harpersofchiswick.com  
www.harpersofchiswick.com

[www.twitter.com/HarpersChiswick](http://www.twitter.com/HarpersChiswick)  
[www.facebook.com/harpersofchiswick](http://www.facebook.com/harpersofchiswick)  
[www.instagram.com/harpersofchiswick](http://www.instagram.com/harpersofchiswick)  
[www.pinterest.co.uk/harpersofchiswick](http://www.pinterest.co.uk/harpersofchiswick)