





Blended expertise, purposefully applied...

We are a Chiswick based residential property consultancy that provides in-depth experience in the disciplines of estate agency, residential lettings, property management, property staging and interior design – a blend of expertise not commonly found in estate and lettings agency businesses.

Having this multi-faceted capability enables us to deliver success to our clients that are seeking a more bespoke and discreet experience than typically offered by high street estate or lettings agents.

Clients value our integrity, energy, expertise and unbiased advice...

The core values of our business are; integrity, clarity and success. Our advice and services are delivered from a trusted platform of professional qualification, experience, dedication and a wealth of in-depth knowledge. This thorough, yet innovative approach to everything that we do has resulted in a strong track record, as evidenced by consistent results and unquestionable success.

What is the new meaning of Bespoke?...

We work with an adaptable approach to our processes to suit individual clients requirements. For example; many of our clients want to avoid public promotion and seek discreet introductions. Over 70% of our transactions are completed without public marketing. We spend less time promoting ourselves and more time combining modern online marketing with a lifetime of networking to introduce the right person in the right way.

More doesn't mean more...

We consciously keep our active portfolio compact, so that we can successfully apply the time, high levels of detail, attention and management you require and deserve whilst achieving our joint objective, success.



ABINGER ROAD, W4

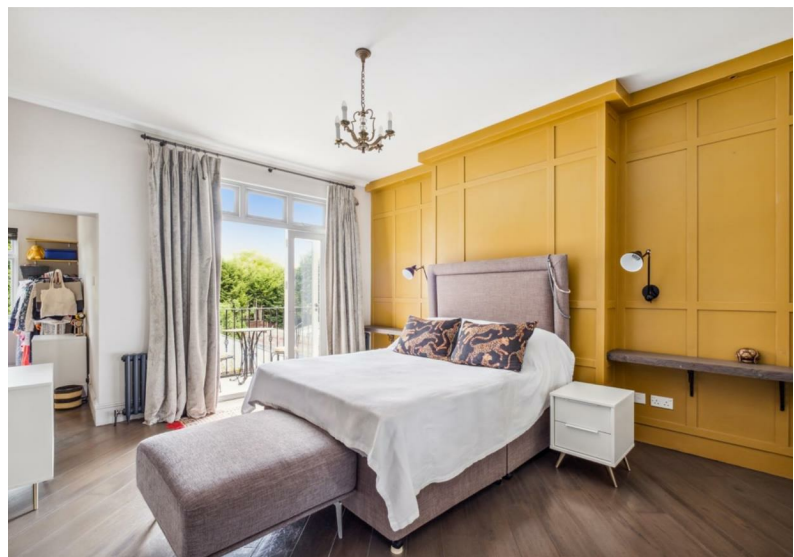
A well presented, semi-detached house nestled in the historic Bedford Park conservation area. This charming property, built in 1890, boasts a generous 2,869 square feet of contemporary living space, offering ample room for comfortable living.

Upon entering, you are greeted by three spacious reception spaces, perfect for entertaining guests or simply relaxing with your family. With five bedrooms, four bathrooms, there is no shortage of space for everyone to enjoy their own privacy and comfort.

One of the highlights of this property is the charming lawned garden with outdoor kitchen, providing a tranquil outdoor space where you can unwind or entertain. The property is in good decorative condition, ensuring that you can move in hassle-free and start enjoying your new home right away.

Located in the sought-after area of Chiswick, this property is fully managed, offering you peace of mind and convenience. Whether you're looking for a family home or a place to entertain friends, this house has everything you need to accommodate a comfortable lifestyle.





Abinger Road, W4

Approximate gross internal area

266.53 sq m / 2869 sq ft

(Including Eaves Storage)

Eaves Storage

9.66 sq m / 104 sq ft

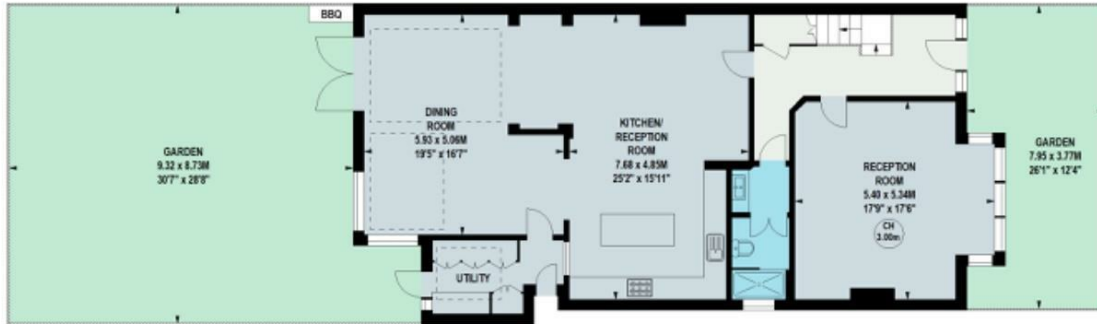
Key :
CH - Ceiling Height



Second Floor

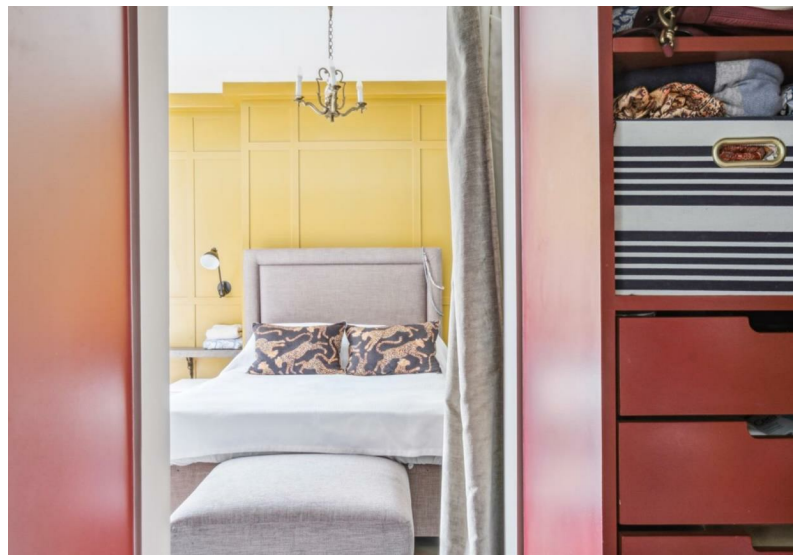


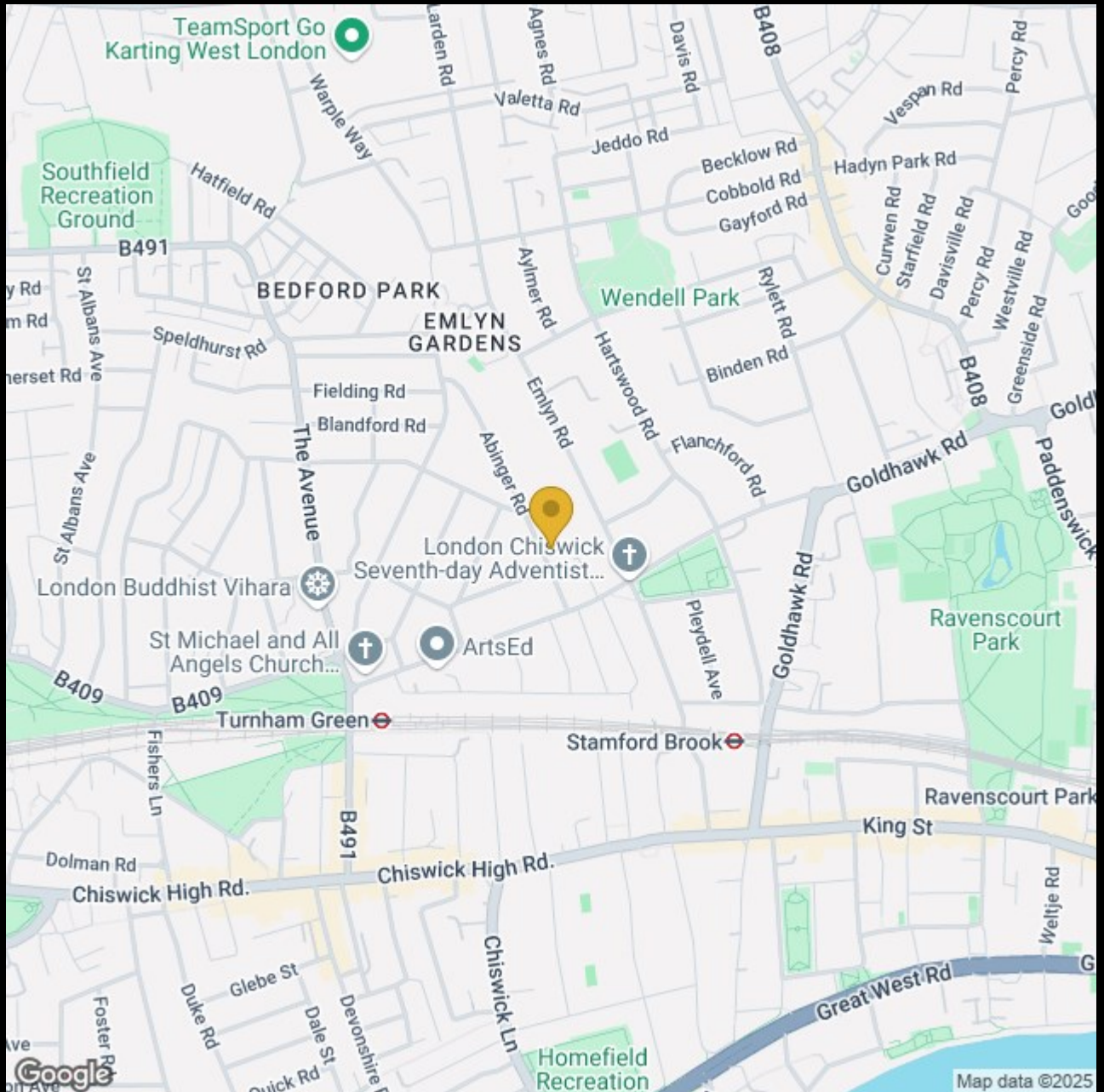
First Floor



Ground Floor

Not to scale, for guidance only and must not be relied upon as a statement of fact.
All measurements and areas are approximate only





TeamSport Go
Karting West London

Southfield
Recreation
Ground

BEDFORD PARK

EMLYN
GARDENS

Wendell Park

London Buddhist Vihara

London Chiswick
Seventh-day Adventist...

St Michael and All
Angels Church...

ArtsEd

Ravenscourt
Park

Turnham Green

Stamford Brook

Ravenscourt Park

Chiswick High Rd.

Chiswick High Rd.

King St

Homefield
Recreation

Great West Rd

Google

Map data ©2025

020 8995 2030
enquiries@harpersofchiswick.com
www.harpersofchiswick.com

www.twitter.com/HarpersChiswick
www.facebook.com/harpersofchiswick
www.instagram.com/harpersofchiswick/
www.pinterest.co.uk/harpersofchiswick/